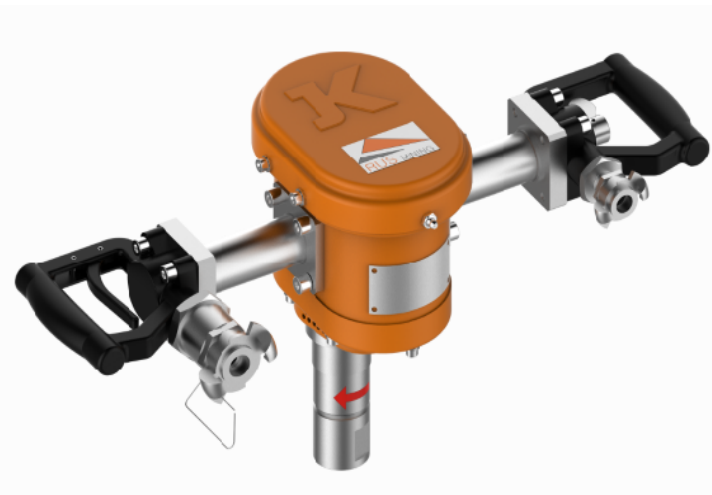


Product Profile

RUS Rib Bolter

Rus Rib Bolter RRB – 50/1.6SA



SPECIFICATIONS

Working air pressure range	58-110psi
Rated air pressure	72psi
Rated Torque @72psi	50 N.m
Rated Rotate speed @72psi	300 r/min
Rated Output power @72psi	1.6 kw
Max. torque @72psi	60 N.m
Air consumption	2.4 m ³ / min
No-load speed range	0-1700 r/min
Noise	≤90 dB(A) Tested
	@workshop
	≤85 dB(A) Tested
	@underground
Water pressure	100-175psi
Water flow rate	20 L/min
Air hose size	25 mm
Drill chuck	various sizes available
	25mm SQ chuck (Standard)
Lubrication oil required	20-30 grade light rockdrill
Recommended oil usage	1 liter per 70 bolts
	based on 5 mins for drilling/ bolting per bolt
Housing material	stainless steel

Contact

Head Office: 5 Montore Road, Minto, NSW 2566 Australia.
 Postal Address: PO Box 322, Minto, NSW 2566
 Phone: (02) 8796 9800
 Fax: (02) 9824 8158
 Email: Russales@rusmining.com.au

Product Profile

RUS Rib Bolter

Rus Rib Bolter RRB-8012.8S

The Rib Bolter is pneumatic hand-held drilling bolter. It is safety explosion-proof, large torque, high speed, light weight, small size, high efficiency, simple structure, convenient maintenance, etc.,

Suitable for detecting geological structure coal seams, exploration and release water, drainage tiles, water injection, coal discharge pressure, drilling through roadway from the front hole, roadway anchor support hole and other special purposes. Therefore, the rig is a very necessary emergency equipment for coal mine safety production.



SPECIFICATIONS

Air pressure(MPa)	58	72	91
Torque Rate(N.m)	60	80	85
Rotate speed(r/min)	315	335	340
Max. Output power(kW)	2	2.8	3
Max. load torque(N.m)	95	115	130
Power starting torque(N.m)	105	125	135
Dynamic stall torque(N.m)	110	130	140
Air consumption(m ³ /min)	3	3.5	4
No-load speed (r/min)	800	950	1000
Machine weight	12kg		
Water pressure	100-175psi		
Water flow	20 L/min		
Air hose size	25mm		
Drill chuck	25mmSQ		
Housing material	stainless steel		

Contact

Head Office: 5 Montore Road, Minto, NSW 2566 Australia.
 Postal Address: PO Box 322, Minto, NSW 2566
 Phone: (02) 8796 9800
 Fax: (02) 9824 8158
 Email: Russales@rusmining.com.au